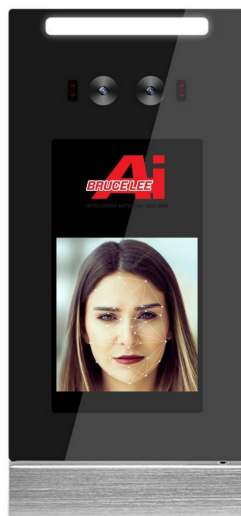




## 5" Face Recognition Access Control Terminal (Doorbell version)

Model:IA368-5



### Main Features:

Support real time live detection

Support for human face tracking exposure in strong backlight

Unique live face recognition algorithm to accurately recognize faces, face recognition time is less than 0.5s

Using Linux operating system, better system stability

The camera uses H.265 Main Profile encoding, compatible with NVR and other storage devices through the ONVIF/GB28181 protocol

Mean time between failures MTBF>50000H

Rich interface protocol, support TCP/IP, UDP, RTP, RTSP, RTCP, HTTP, DNS, DDNS, DHCP, SMTP, UPNP, MQTT protocol, support Windows/Linux

Support 10,000+ face matching library and 80,000 face recognition records

Operating temperature: -30 °C - +60 °C

Outdoor IP42 waterproof and dust proof

Support tamper alarm

Support microphone input audio, speaker output audio

Rich hardware interface

(I/O, WG26, WG34, RJ45, Door sensor, Doorbell, Open door, Alarm, RS485)

5-inch IPS full-view HD display, no streaking and delay

Support automatic gain control and automatic white balance

Built-in video monitoring dedicated black light level sensor

The device supports local login to manage, query, and configure

The device supports connect to an external access control host or Wiegand reader through the international standard Wiegand

Support mobile phone monitoring

3D noise reduction and fog-passing technology makes the monitoring picture under low illumination more clear and delicate

Support code stream and I frame interval setting

Support video area partial blocking

Support ROI coding

Support automatic white balance and manual white balance

Support setting maximum exposure time

Support 2D noise reduction, 3D noise reduction

Support recording schedule time period and upload mode setting

Support video brightness, contrast, hue, saturation, gamma adjustment

Support setting the maximum auto exposure time

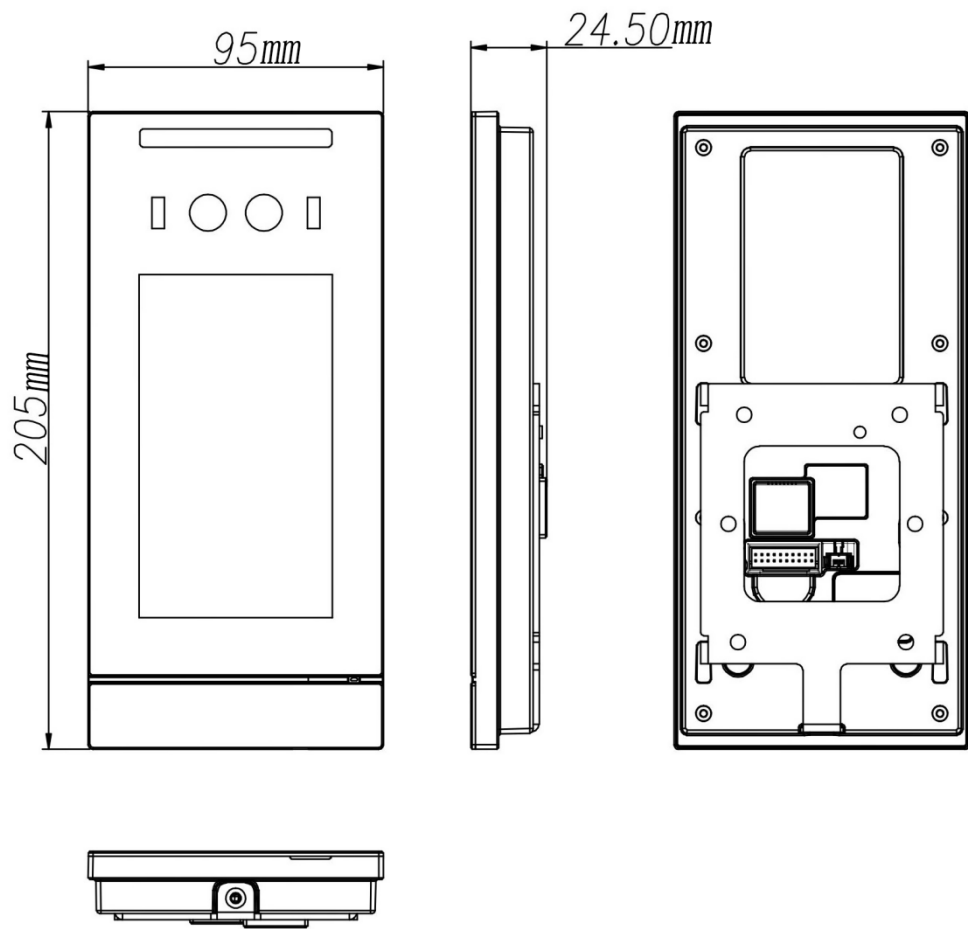
Support face intelligent exposure, face smart enhancement settings

### Specifications:

Model	IA368-5
Hardware	
Processor	Dual Core Processor + 1G memory + 8G EMMC
Operating system	Linux Operating system
Storage	Support TF card storage
Viewing angle	Vertical viewing angle: 30°, Horizontal viewing angle: 30°
Sensor	1/2.8" Progressive Scan CMOS
Lens	MTV4.9mm
Speaker	Voice playback content can be customized
Performance	
Recognition height	1.2~2.2 meters, angle adjustable
Recognition distance	0.5~1.5 meters, depends on lens
Recognition time	Less than 0.5 seconds
Storage capacity	80,000 capture records
Face capacity	10,000pcs
Support card type (Optional)	13. 56MHz, support Mifare S50, S70 card, ultralight card, NTAG card, DESFire D21, D41, D81, contactless CPU card
Wifi module (Optional)	IEEE 802.11b/g/n standard, 2.4Ghz frequency band
Interface	
Power out	DC12V/2A
Network interface	1 RJ45 10M / 100M adaptive Ethernet port, Gigabit Ethernet port can be customized
Wiegand interface	1ch Wiegand interface input/output
Alarm interface	1ch alarm interface
Door sensor interface	1ch magnetic interface
Open interface	1ch open door interface

Doorbell interface	1ch doorbell interface	
Lock interface	1ch lock interface	
Communication interface	1ch RS485 interface	
Camera		
Camera	Dual cameras	
Effective pixels	2MP, 1920*1080	
Min Illumination	Color 0.01Lux @F1.2(ICR);B/W 0.001Lux @F1.2 (ICR)	
SNR	≥50db(AGC OFF)	
WDR	120db, ISP algorithm face partial exposure	
Image	MainStream	50Hz: 25fps (1920×1080,1280×720)
		60Hz: 30fps (1920×1080,1280×720)
	Sub Stream	704*576, 25 frames/second, 640*480, 25 frames/second, 352*288, 25 frames/second
Function		
Web side configuration	Support	
Remote upgrade	Support	
Regular		
Operating temperature	-30°C - +60°C	
Working humidity	0~90% relative humidity, no condensation	
Salt spray	Level Rp6 or above	
Antistatic	Contact ±6KV, air ±8KV	
Power	DC12V/2A	
Waterproof	IP42	
Power	15W(MAX)	
Equipment size	205(L) * 95 (W) * 24.5(T) mm	
Screen size	5 inches IPS HD screen	

Size:



Interface:

No.	Name	Quantity	Remark
①	Ground	1	Black and White:GND
②	Wiegand input/output	1	Orange:WGL_D0 Orange and white:WGL_D1 Brown:WGO_D0 Brown and white:WGO_D1
③	Fire in	1	Yellow:FIRE_ALM
④	Alarm out	1	Purple:NO Blue:COM White:NC
⑤	Doorbell	1	Light blue:BELL
⑥	Power	1	Red:WG_12V, Black:GND
⑦	Door sensor	1	Light green:DS
⑧	Open	1	Green:OPEN
⑨	Lock	1	Blue and white:NC Green and white:COM Gray:NO
⑩	RS485	1	Red:485+ Black:485-



**INTELLIGENT ARTIFICIAL SDN. BHD**

**INTELLIGENT ARTIFICIAL SDN BHD**

No.41, Jalan Puteri 5/3, Bandar Puteri, 47100 Puchong, Selangor

Tel: 03-8060 9449 Whatsapp: 016-227 6806/ 018-277 7728

[sales@faceid.com.my](mailto:sales@faceid.com.my)

[www.faceid.com.my](http://www.faceid.com.my)